

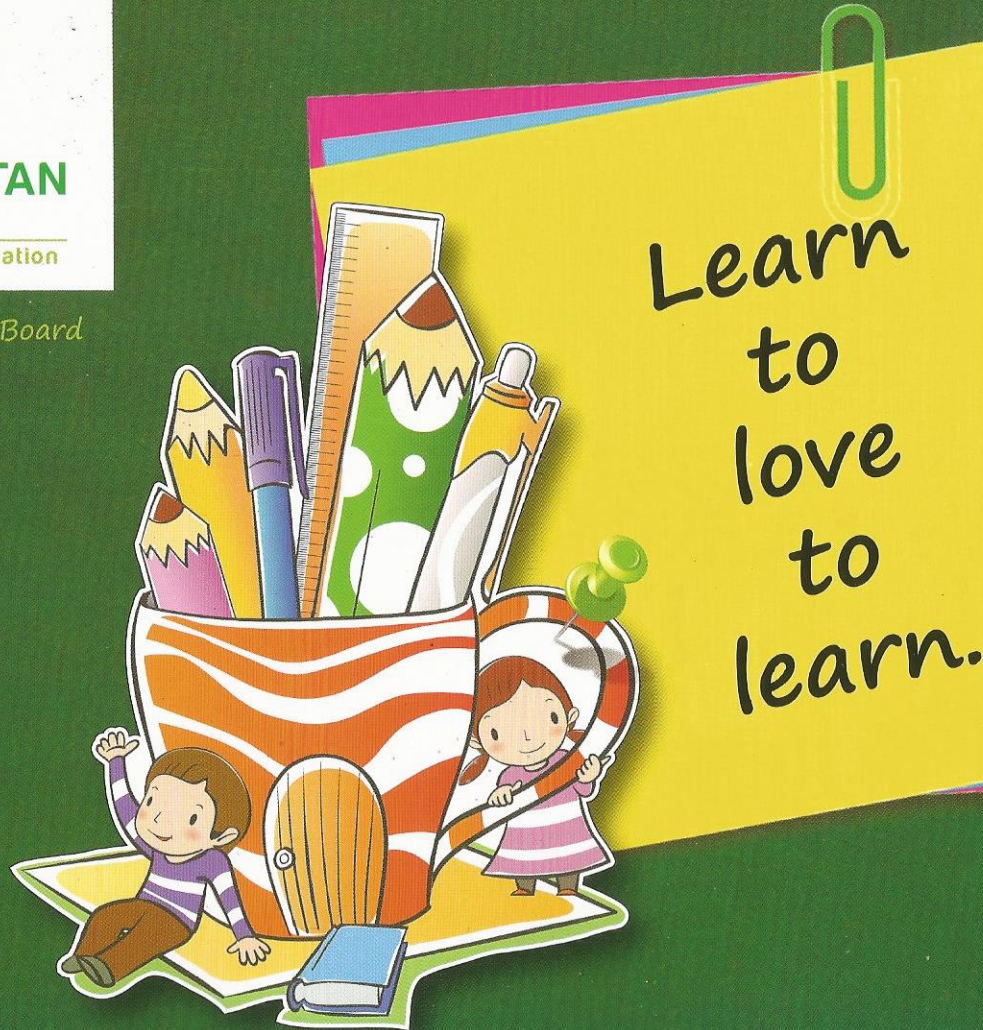
Shree Nutan Kelavani Mandal's



**ASPEE NUTAN
ACADEMY**

Knowledge Builds Nation

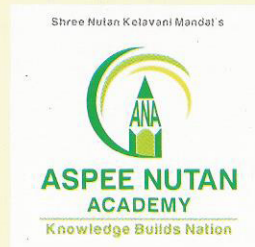
Affiliated to ICSE Board



"Let the noble thoughts come from all directions." – Rigveda

Each child is unique. Each child has his or her own unique skill sets that need to be carefully nurtured. Every child is gifted, they just unwrap their packages at different times.

A school should not be a wrestling ring where children are made to tussle for marks. A school is a place of learning which focuses on a child's holistic growth.



Chairman's Message

At Aspee Nutan Academy, we are committed to build a school that is not only modern in its infrastructure but also in its curriculum design and classroom transactions; a school that recognizes students as individuals and ensure that they get every opportunity to blossom; that each child's journey through these impressionable years is meaningful, exciting and full of relevant learning. I warmly welcome you and assure that you will enjoy learning at ANA each day as we believe in the quote by Alfred Mercier that "What we learn with pleasure we never forget."

- Kiran Patel

Vision & Mission



Our Vision: Our vision for Shree Nutan Kelavani Mandal's Aspee Nutan Academy is one where children are educated through a collaborative effort among parents, faculty, staff, students and the community. We aim to play a pivotal role in shaping the lives of our young children and help them demonstrate:

1. A set of moral values – honesty, integrity and good judgement.
2. A complement of basic skills – linguistic, mathematical, scientific, artistic, physical and social.
3. An inquisitive mind with a deep rooted desire for knowledge.
4. Strong self-esteem and high personal expectation.
5. Tolerance and respect for others.



Our Mission: Aspee Nutan Academy believes that the underpinning of change relies on the creation of a learning community, where everyone has something to learn and something to teach. The mission of the school is to develop in each child the love of learning and ability to nurture family members, friends, and self, the ability to engage in critical thinking and to demonstrate complete mastery of the academic building blocks which are necessary for a successful future.



Values

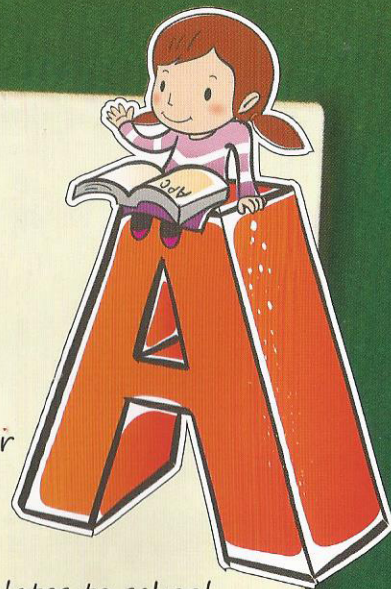
We aim to instill the following values as part of the core education at Aspee Nutan Academy.


Education First: At Aspee Nutan Academy, education is our primary focus. Activities that seek and support educational excellence shall be given priority over those that do not. The basic role of teachers is to help children learn.

Quality: Throughout a student's time at school, the subject of quality and how it relates to school work will be discussed with students where we challenge them to do their very best. It is not our goal to have students merely completing assignments without attempting to produce a quality product.

Hard Work: Creating high quality work is not always easy. We are committed to make learning more interesting, exciting and fun as much as possible. However, we recognize and want parents and students to recognize that while learning is not always easy, it is fundamental.

Life-long Learning: We recognize that learning does not begin or end with school. We want students to learn skills that will allow them to continue to direct their own learning. The essence of this is independence and self-reliance.





Love of Learning: Children need to learn to love learning as its own reward. We encourage students to focus on internal rewards and motivations rather than being dependent on external rewards.

Self-esteem: We believe that self-esteem is built upon competence. We can, and do praise children appropriately, but we do not engage in false praise. We actively assist and encourage children in their journey towards competency. We want them to take pride in what they do well. We also want our students to believe that they can make a difference in the world.

Respect: We strive to create a climate of mutual respect among students, parents, staff and community members. Students are expected to show respect to others, and can in turn, expect to be treated with respect by others.

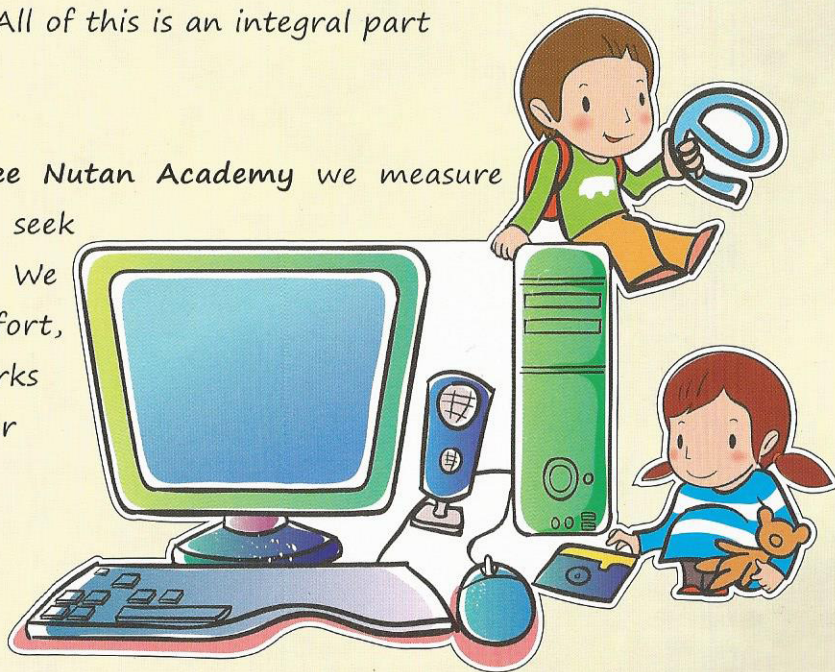
Personal Responsibility: We expect students to take personal responsibility for their own learning. We cannot teach them anything if they are determined not to learn. We also expect them to take personal responsibility for their actions and to be willing to accept the consequences.

Responsibility toward Others: Any member of a community has some responsibilities to his neighbour. Our students have some special abilities that carry with them greater opportunities to serve. We want students to understand the contributions they can make to society and to act responsively.

Role Models: We have high expectations for our students. We, as parents and staff, are committed to serving as appropriate role models for our students. We need to demonstrate our values to our students on a daily basis in our own behaviour. We cannot reasonably expect from them that which we are not willing to do ourselves.

Diversity: We live in a diverse society. Students need to understand and respect differences, while seeking to find common ground. Students also need to understand and evaluate different opinions and intellectual perspectives. All of this is an integral part of our curriculum.

Continual Improvement: At Aspee Nutan Academy we measure performance and continually seek opportunities to raise the bar. We acknowledge and recognize effort, celebrate the achievement of benchmarks and milestones, and strive to get better each and every day.



Key Highlights of the School

1. Founded in 1957 with a great pedigree of leaders and educationalists.
2. 100% result in SSC Board Exams for last ten years in English Medium.
3. State-of-the-art gymkhana, audio-visual room, computer and science labs.
4. Consistent performance across academics, sports and extracurricular activities.
5. Affiliated to the ICSE Board from academic year 2019-2020.
6. Excellent performance at various Interschool events and competitions.

Our Background

Aspee Nutan Academy traces its roots back to 1957 when it was formed as a charitable public trust known as Shree Nutan Kelavani Mandal by a group of visionary leaders, educationalists and community builders. What started as a small school with a handful of students, has over the years, grown into a multi-faceted educational institute.



Academics

Our school has been achieving

1. Maximum distinctions and first class in SSC Board Exams.
2. First rank all over Maharashtra amongst all Gujarati schools in SSC results in March 2014.
3. Ranks in Merit List in SSC results for many years.



Sports

1. Students have been winning at the District, State and National Level by participating in various sport events like Javelin Throw, Fencing, Skating, Chess, Carrom, Weight Lifting, Table Tennis, Discus Throw and Shot Put.
2. The girl students are also encouraged to participate and have won awards in various sporting events viz., Weight Lifting, Fencing, Volley Ball and many other games.

Extra Curricular Activities

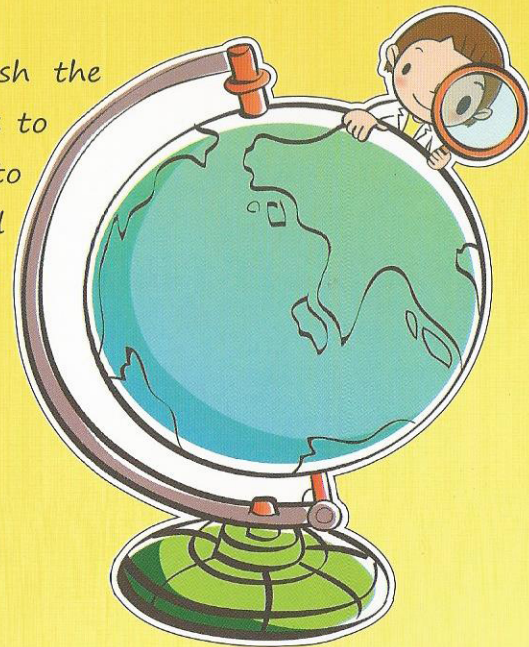
1. Many prizes were received in Elocution, Mono-acting, Science Project, Essay Writing, Adult Education Project, Science Play and Teaching Aids at Zonal as well as State Level.
2. Won Best School Award for two consecutive years amongst the 'P' Ward Schools.
3. Aspee Nutan Academy has won prizes for Dramatics, Elocution, Singing, Skating and many more.
4. Many prizes were won at Mani Bhavan for various competitions such as Group Singing, Elocution, Essay Writing, Mono-acting, etc.

Next Big Leap

At Shree Nutan Kelavani Mandal we continue to push the boundaries of growth and success. In our earnest efforts to cater to the growing needs of our community, we intend to offer our parents and children an upgraded infrastructure, modern teaching methodologies and a holistic learning environment.

Aspee Nutan Academy (ICSE school) has its foundation built on the legacy, quality and success of Shree Nutan Vidya Mandir (SSC English Medium). The institution function on the ideology of 'Quality Education at Affordable Price'.

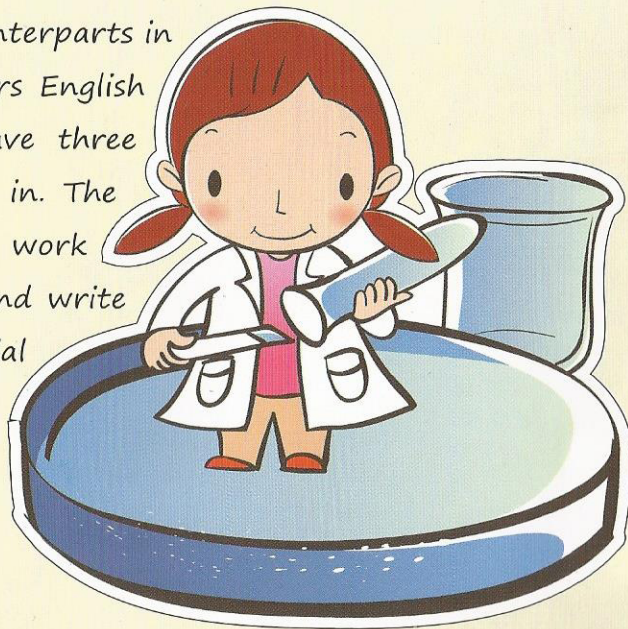
Aspee Nutan Academy stands to inherit the vast estates of knowledge and expertise from Aspee Nutan group of schools which will aid to the development of strong and healthy foundation for Aspee Nutan Academy's radiant future.



The Child-friendly ICSE Model

Aspee Nutan Academy will be affiliated to the ICSE board. The ICSE syllabus has a distinct advantage over others. The ICSE curriculum prepares the child for higher studies and competitive exams. ICSE's flexibility allows the student to opt for subjects of his/her interest.

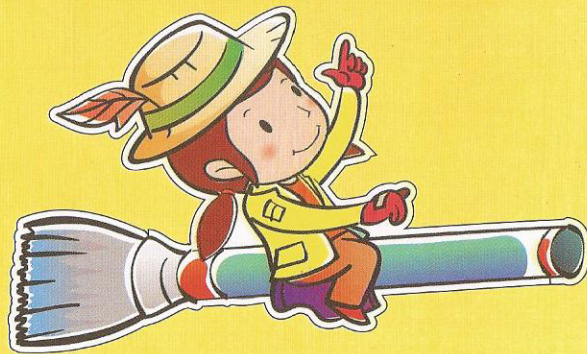
ICSE Standards give student an edge over their counterparts in higher studies. They have only two language papers English and Hindi as against the SSC students who have three language papers which are very difficult to score in. The marks are complemented by compulsory project work that requires the students to explore the subject and write his or her own understanding of it. It is very essential that we move with the times and our decision to follow ICSE curriculum is one such step in this direction.





Advantage of ICSE Curriculum

1. Concept learning
2. Project based
3. Activity based
4. Experiential model of learning
5. Child-centric learning
6. Encourages spirit of inquiry, reflection and communication
7. More self-reliant and self-confident
8. Goal oriented
9. Allows children to compete in the global arena
10. Trust and fair play
11. Schools with 'Indian Ethos'
12. Allowing schools to evolve its own niche
13. Catering to the needs of the children
14. Giving freedom to experiment with new ideas and practices
15. Diversity and plurality – the basic strength for evolution of ideas
16. Schools to motivate pupils towards the cultivation of:
 - a. Excellence – The Indian and Global experience
 - b. Values – Spiritual and cultural (to be the bed rock of educational experience)
17. Strong roots in the national psyche and sensitive to national aspirations





Pre-Primary: The Years of Wonderment

"Tell me and I'll forget. Show me and I may not remember. Involve me and I'll understand."

Integrated learning is the base of pre-primary education. We encourage kids to explore the joy of learning while they play, thus nurturing them into competent scholars of tomorrow with emphasis on analytical thinking and critical reasoning.


The lessons are designed to stimulate their curiosity levels and not bore them or challenge them and every lesson is just another interesting game for them. Gradually they are introduced to events and taught safety rules, personal hygiene, basic concepts of yoga so as to imbibe disciplinary values. They are given liberty to scribble, draw and have fun in their own creative ways.

Primary: The Years of Adventure

"You see things and say 'Why'? But I see things and say 'Why not?'" – G B Shaw

The primary curriculum aims at physical, mental, emotional and social development. We aim to encourage and inspire every child to observe, analyze and question.

Various projects are planned on various subjects that bring the students, their parents and the teachers together as a team. While making these projects, children acquire hands-on knowledge about their subjects. Several events such as science shows, physical training activities, Hindi and English events, etc. are organized. We ensure that young minds have something new to look forward to each day.



The Secondary Curriculum focuses on the academic knowledge and content development. It is purely based on experiential learning and skill based education. Regular assessments, projects, activities, and presentations help students to attain 100% understanding of concepts as prescribed by the ICSE Board. The Secondary Curriculum focuses on development of personality and hones the talents of students to achieve desirable changes and attain lifelong learning.


All work and no play makes Jack a dull boy.

Co-curricular Activities: At Aspee Nutan Academy we believe that co-curricular activities are central to developing confidence and providing wholesome education. We provide full encouragement to our students to participate and explore all opportunities that interest them. Students will be able to take part in a wide variety of activities and competition not only building recreation and relaxation, but also as an aid to educational advancement.

Sports: At Aspee Nutan Academy special emphasis is given on sports, as sports is seen as a necessary component for a full and all-around education. We aim to create an awareness of the crucial importance of regular physical activity and fitness, teamwork and a keen positive competitive spirit.

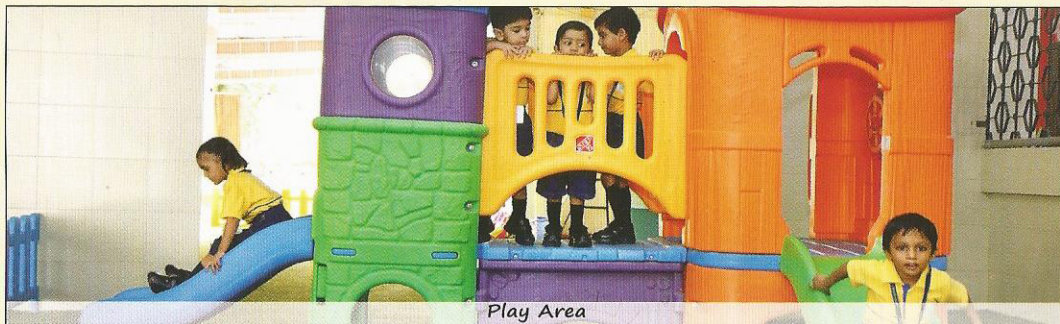
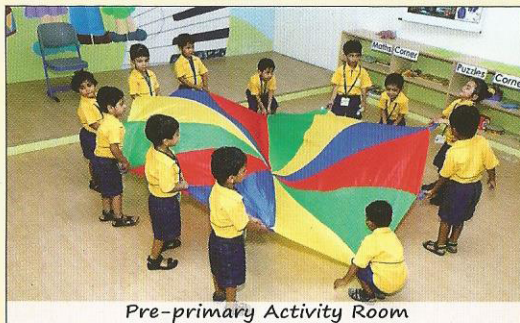
Other Activities: Yoga, Aerobics, Karate, Skating, Music, Volley Ball, Athletics and Field Trips to various educational and informative places are conducted.





Infrastructure: At Aspee Nutan Academy the campus and infrastructure is designed to advance and support the holistic development of the children.

Classrooms: The campus comprises of series of naturally lit, airy classrooms. Indoor and outdoor spaces intersect and flow into each other so that children can learn, draw and paint. Children are engaged with the campus in many ways, their artworks and poems light up the corridors, lobbies and walls and their imaginations that enhances the entire school environment.



All our classrooms are equipped with multimedia projectors, computers with broadband internet access connected to central server with thousands of modules on different subjects by HCL. The different modules will help make learning engaging and effective.

Security surveillance: The school gives utmost importance to the Security of the students and staff. Hence each nook and corner is covered with Hi-Tech CCTV cameras, Security guards and fire fighting equipments on all floors.

Education Aids: Aspee Nutan Academy imparts a value based education providing immense opportunities to its students in an intellectually stimulating and a high technologically conscious environment.

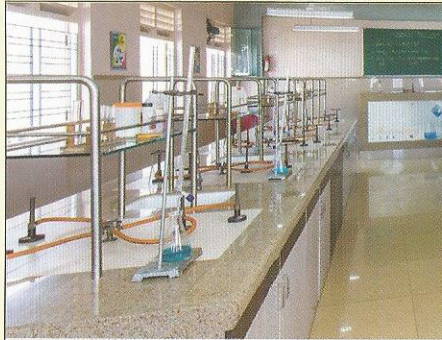
Laboratories: Our laboratories are designed to provide hands-on experience to the students to learn a wide range of topics across all classes which include theoretical as well as practical aspects of learning.

- a. **Computer Lab:** The school has a huge computer laboratory which is equipped with all latest computers, printers and internet access which enables the students to learn.

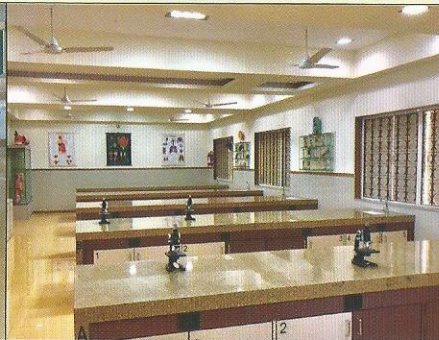


Computer Laboratory

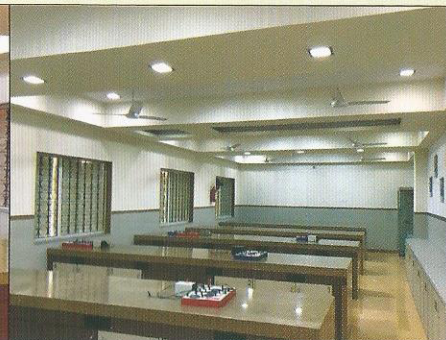
- b. **Science Labs:** The school has a well equipped science laboratories with state-of-the-art facilities and an exhaustive range of apparatus.



Chemistry Laboratory



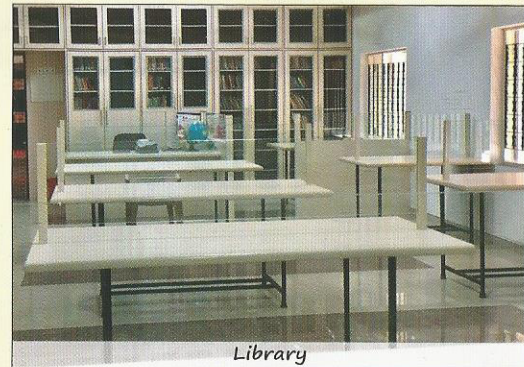
Biology Laboratory



Physics Laboratory

- c. **Math Lab:** Using a hands-on approach, active learning strategies and fun interactive activities, the students explore and learn meaningful mathematics in highly stimulating and motivating environment. The mathematics teachers and students use the UTH kit, abacus, jodo blocks, fraction kit, the money kit and other aids to make Mathematics more fun.

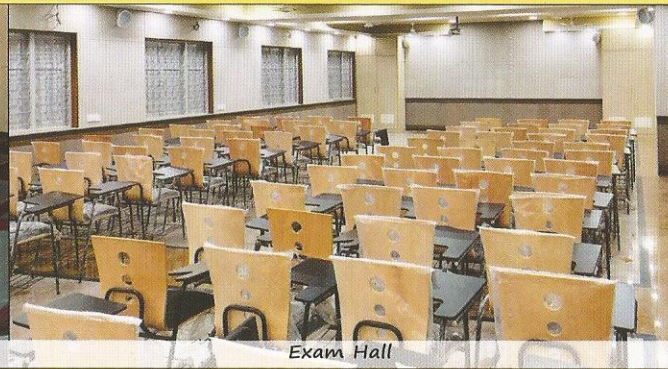
Library: For further developing the innate potential of our academicians, our school library provides information and ideas that are fundamental to functioning successfully in today's information and knowledge-based society. The school library equips the students with life-long learning skills and develop their imagination, enabling them to live as responsible citizens. The students and teachers both benefit from this resource as it contains books, CDs, DVDs on a variety of subjects for extensive reference and research.



Library



Audio-Visual Room




Exam Hall

Language Lab: Aspee Nutan Academy has a special laboratory – The Language Lab. This is a space that draws the children to the optimal holistic experience they feel when they act with total involvement in the task at hand and gain a sense of pleasure, independent of the results.

Our Language Lab is be well equipped with the state-of-art computers incorporated with Interactive Early Learning software from Waterford for pre-school and primary students. The programs will provide resources necessary for successful learning in classroom, offering an unrivaled depth and variety of instructions.

The highlights of program is as follows:

1. Thoroughly researched and structured curriculum.
2. Computer activities with rich and engaging graphic.
3. An intelligent sequencer that caters to each child's individual learning needs.
4. In-built parallel evaluation.
5. Hundreds of beautifully illustrated, language-rich children books based on software content.

- 
6. Songs and music incorporated in the program for better retention.
 7. A collection of teacher resource books based on the research.

The above programs are incorporated to build an early foundation in reading, math and science of our young academicians.

Facilities

Facilities which are made available at **Aspee Nutan Academy** are as follows.

Counselling & Guidance: Our ceaseless work towards inculcating excellence is complemented by the belief that each child's needs and abilities are different. **Aspee Nutan Academy** will thus design interventions for students who need support and remedial care.

Health Check-up: In today's world, health and safety are the first priorities where children are concerned. School is one of the most important place for promotion of good health and protection. At **Aspee Nutan Academy** we will have reliable arrangements for ensuring the well-being of all our children.

The school has a tie-up with Ayaksha Health Services, a company which provides an



Medical Room

integrated approach towards health and safety in schools. We conduct a health camp every year and this program brings about an increased health consciousness among students and parents.

The school has a well-qualified nurse provided by Ayaksha Health Services who is available during school hours to provide first-aid facilities in the school. In case the Nurse feels that the student requires the attention of a qualified Doctor, the school will use the services of the Hospitals nearby with the consent of the parent. The school infirmary is well-equipped with a medical bed, a wheel chair, nebulizer, oxygen cylinder, etc.

Transportation: We have a tie-up with dependable contractors who provides transport facilities to pick children from near their homes and drop them at same point at the end of the school day. The school provides transport to students on request. The codes and policies of transport facilities is given at the time of admission. We also have trained lady attendants to take care of the students on board.



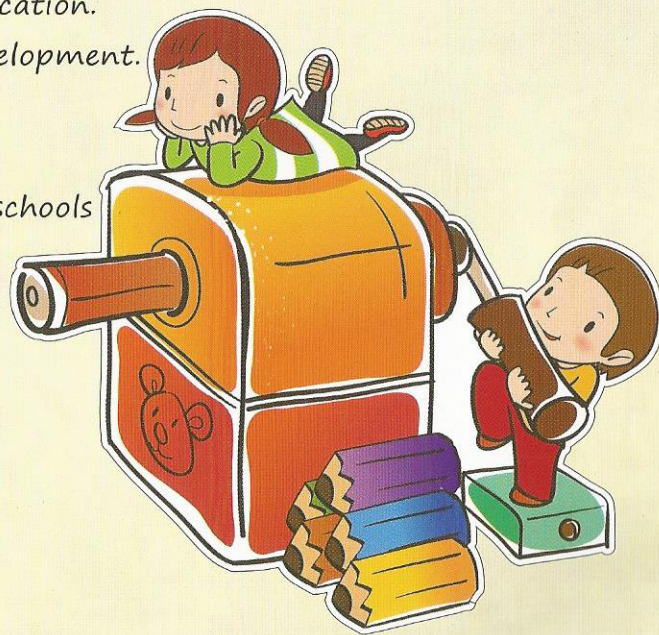
Teachers Training: "Ideal teachers are those who use themselves as bridges over which they invite their students to cross, then having facilitated their crossing, joyfully collapse, encouraging them to create bridges of their own." – Nikos Kazantzakis



Teacher support and development is considered to be the backbone of any school. Aspee Nutan Academy whole-heartedly acknowledges the role of teachers in shaping the institution. For a teacher to be effective, it is imperative to recognize the factors that permit teachers to perform their roles effectively.

Careful selection of trained teachers is followed by a strong teacher development and support program. A well-designed in-service training program provides opportunities for teachers to:

1. Be informed about the latest research findings in education.
2. Be in touch with their inner self and professional development.
3. Develop interpersonal skills necessary for meaningful interaction with school-age children.
4. Learn from the strengths of experienced teachers in schools in India and abroad.
5. Upgrade their skills and knowledge levels as teachers of an integrated educational curriculum.



In order to address the needs of the teachers, members of the core team regularly conduct training and professional support workshops. In addition, workshops are also conducted by resource persons from accomplished schools of learning and universities of higher education. Intense in-service workshops are conducted around each vacation of the school calendar. These are supported by various specialized training programs conducted by reputed organizations such as:

1. Learning Links (Bengaluru), TAP and ILFS to create enriching environments for both teachers and the children.
2. Training for British Council Exams and other competitive exams.
3. Training for various Cambridge examinations like YLE, including Starters, Movers, Flyers, PET and KET.
4. Homi Bhabha Science examination.
5. Rashtrabhasha Hindi examination.
6. The following programs are conducted to further enhance and hone talents of the young students enrolled

- a. Karadi Path
- b. Waterford
- c. Young learners English Program
- d. Lesson in the dark
- e. Think Lab
- f. First In Math
- g. Butterfly Kits



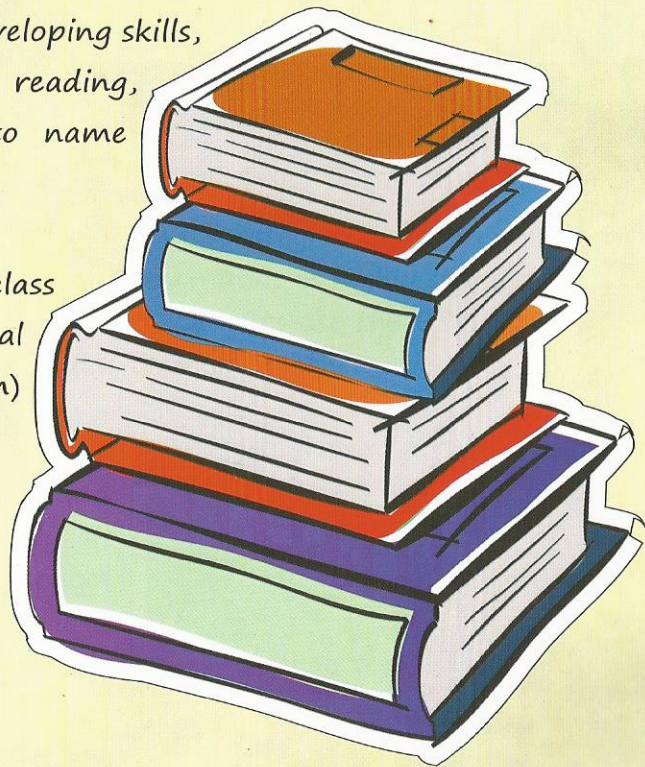
THE ENGLISH ADVANTAGE



Evaluation & Examination: Evaluation is considered as key to understanding and enabling a child's progress. Evaluation is being carried out in conjunction with all three partners – Child, Teacher and Parent.

Up to primary, the assessment is carried out through worksheets and projects, where the child is evaluated on all his/her developing skills, equal emphasis given to all aspects – language, reading, writing, communication, knowledge, application, to name a few.

In the secondary school, both internal assessments (class test, schedule test and project work) and external assessments (semester exam at the end of each term) will be conducted.





Admission

At Aspee Nutan Academy the admission process is simple and transparent. The minimum age a child should attain at the time of admission is defined in the circular given, which is as per the government regulations.

The admission form and prospectus is available at the school office. Kindly fill in the admission form and submit it to the admission-in-charge on the specified date. The form should be duly filled and be accompanied with:

1. Birth Certificate of the child.
2. Two passport size latest photographs of the child.
3. Medical Certificate of the child.
4. Blood Group details certified by the pathologist.
5. Proof of residence – Ration Card, Electricity Bill, Telephone Bill or Bank Account Statement (any one).
6. Proof of sibling (wherever applicable).
7. Proof of alumni of the parent (wherever applicable).
8. For admission in Primary & Secondary, an original copy of School Leaving Certificate with counter signature of the Education Officer will be required, at the time of admission only applicable in case of Interstate transfer.
9. Aadhaar card of the child
10. Copy of marksheet of last grade attended in the previous school (for Grade 2 & above)

With knowledge, let's together build our nation!

Shree Nutan Kelavani Mandal's



**ASPEE NUTAN
ACADEMY**

Knowledge Builds Nation

Affiliated to ICSE Board

Marve Road, Malad (West), Mumbai – 400 064

Tel.: 28020313, 28632989, 28614449

website : www.aspeenutanacademy.org

Follows us on:  Facebook  Instagram